

Market Basket Survey of Remote Community Stores in the Northern Territory April - June 2004



Nutrition & Physical Activity Program
Department of Health & Community Services



Northern Territory Government
Department of Health and Community Services



ACKNOWLEDGMENTS

Without the assistance of Community Councils and Store Managers, Managers of supermarkets and local corner stores, the Market Basket Survey could not have been undertaken. We thank you for your cooperation and assistance.

We would also like to thank the Nutritionists, Aboriginal Nutrition Workers, Aboriginal Health Workers, and other community members involved for their assistance in surveying stores.

DISCLAIMER:

This is general information, correct at the time of publication to the best of our knowledge.

© December 2004 – Department of Health and Community Services

This work is copyright. It may be re-produced in whole or part subject to inclusion of an acknowledgment of the source and on the condition it is not used for commercial purposes or offered for sale. Reproduction for purposes other than those indicated above, require the written permission of the Northern Territory Government through Department of Health and Community Services. Inquiries should be addressed to the Director, Department of Health and Community Services, Legal Branch, PO Box 40596, Casuarina NT 0811.

Table of Contents

Executive Summary	1
1. Background	2
2. Results	3
2.1. 2004 Survey	4
2.2. Cost compared to last year's survey	10
2.3. Comparison of surveys 1998 - 2004	11
3. Discussion	14
4. Summary	15
5. References	15
Appendices	16
Appendix A: Foods in the Market Basket Survey.....	17
Appendix B: Fortnightly Income for Hypothetical Family of Six – 2004*	18
Appendix C: Survey results of the 2004 Market Basket Survey by district and community	19

List of tables

Table 1: Ownership/Management characteristics in remote stores	4
Table 2: Employment characteristics of community stores	4
Table 3: Comparison of the range of fresh fruit and vegetables available in remote stores	5
Table 4: Comparison of the quality of fresh fruit available in remote stores	5
Table 5: Comparison of the quality of fresh vegetables available in remote stores	5
Table 6: Availability of items in the food basket in remote stores	6
Table 7: Average cost of food basket in remote stores	6
Table 8: Cost of food basket in district centre supermarkets and corner stores	7
Table 9: Comparison (in percent) of the cost of the food basket in remote stores (averaged) with a Darwin supermarket and Darwin corner store	8
Table 10: Changes (in percent) in food prices in remote stores from 2003 to 2004	10
Table 11: Changes (in percent) in food prices in district centre supermarkets from 2003 to 2004	10

List of figures

Figure 1: Location of stores surveyed and cost of food basket in each district	3
Figure 2: Average cost of the food basket and population of community	9
Figure 3: Relationship between cost of food basket and income in remote communities compared to Darwin	9
Figure 4: Average number of varieties of fresh fruit and vegetable in remote stores 1998-2004	11
Figure 5: Average cost of food basket in remote stores 1998 – 2004	11
Figure 6: Cost of food basket in district centre supermarkets 1998 – 2004	12
Figure 7: Cost of basket of foods in remote stores and Darwin supermarket 1998-2004	13
Figure 8: Percent of income needed to buy the food basket for family at Darwin supermarket and remote store	13

Executive Summary

- Sixty rural and remote stores in the Northern Territory (NT) were surveyed between April and June 2004.
- A standard basket of foods was priced in each of the stores. This basket is sufficient to provide foods for a hypothetical family of six for a fortnight. A major supermarket and corner store in each of the district centres were surveyed for comparison of prices.
- In addition to price, information was also collected on availability and variety of selected healthy food items, quality of fresh fruit and vegetables, store ownership, employment characteristics and other store management practices.
- The average cost of foods was \$578 in remote stores, \$533 in district centre corner stores and \$467 in district centre supermarkets.
- Barkly remote was the most expensive district (\$657) and Darwin remote the least expensive district (\$545).
- On average, the cost of the food basket in remote stores was 27% more expensive than the Darwin supermarket, and 18% more expensive than the Darwin corner store.
- The cost of the food basket increased by 3% in remote stores and increased by 5% in district centre supermarkets compared to the same period last year.
- The percent of family income required to purchase the basket of foods was 28% in a Darwin supermarket and 35% in the remote stores.
- 61% of people employed in remote community stores were Aboriginal.
- The average number of fresh fruit choices available in remote stores was 7.
- The average number of fresh vegetable choices available in remote stores was 13.
- On average 97% of items in the food basket were available, or usually available, in the remote stores surveyed.

1. Background

Poor nutrition is a major contributor to the ill health of Aboriginal people living in remote communities. It has been estimated that approximately 95% of the foods eaten in remote Aboriginal communities are purchased from the community store¹. Community stores are therefore key players in eliciting and sustaining improvements in the health of Aboriginal people living in remote areas.

In 1995 the NT Department of Health and Community Services developed the NT Food and Nutrition Policy. One of the strategies identified in this policy was to develop a tool (the “Market Basket Survey”) to monitor food cost, availability, variety and quality in remote community stores. The Market Basket Survey also enables information to be collected on: store management, employment of Aboriginal people, existence of a store nutrition policy, community development initiatives by the store such as sponsorship and donations, nutrition promotions and store worker training. The first Territory wide survey of remote stores was carried out in 1998 when 45 stores were surveyed².

The survey includes a basket of foods which meets the average energy and recommended nutrient needs of a hypothetical family of six people for a fortnight. The family was chosen to represent a cross-section of people who had important nutrient requirements because of their age and sex. The family consists of:

- a grandmother aged 60 years,
- a man aged 35 years,
- a woman aged 33 years,
- a male aged 14 years,
- a girl aged 8 years, and
- a boy aged 4 years.

The foods that make up the basket to feed this family are shown in Appendix A. Model C from the Core Food Groups³ was used to determine the quantities of each food group required to meet 70% of the Recommended Dietary Intakes. The ‘basket’ was then adjusted to include enough food to meet 100% of the family’s nutrient requirements and 95% of the family’s energy requirements for a fortnight.

The actual selection of brands, sizes etc. was made by consultation with the leading grocery suppliers in the Northern Territory and with input from nutritionists regarding their observations in communities. The most commonly sold items were ones included in the ‘basket’.

As part of the survey, a major supermarket and corner store in each of the district centres is also surveyed for comparison of prices. The corner store is a small suburban supermarket that provides a benchmark store with a similar buying power to the remote stores.

The income for the hypothetical family was determined by obtaining Centrelink and Family Assistance figures from the Centrelink website. Details of the family’s income are shown in Appendix B.

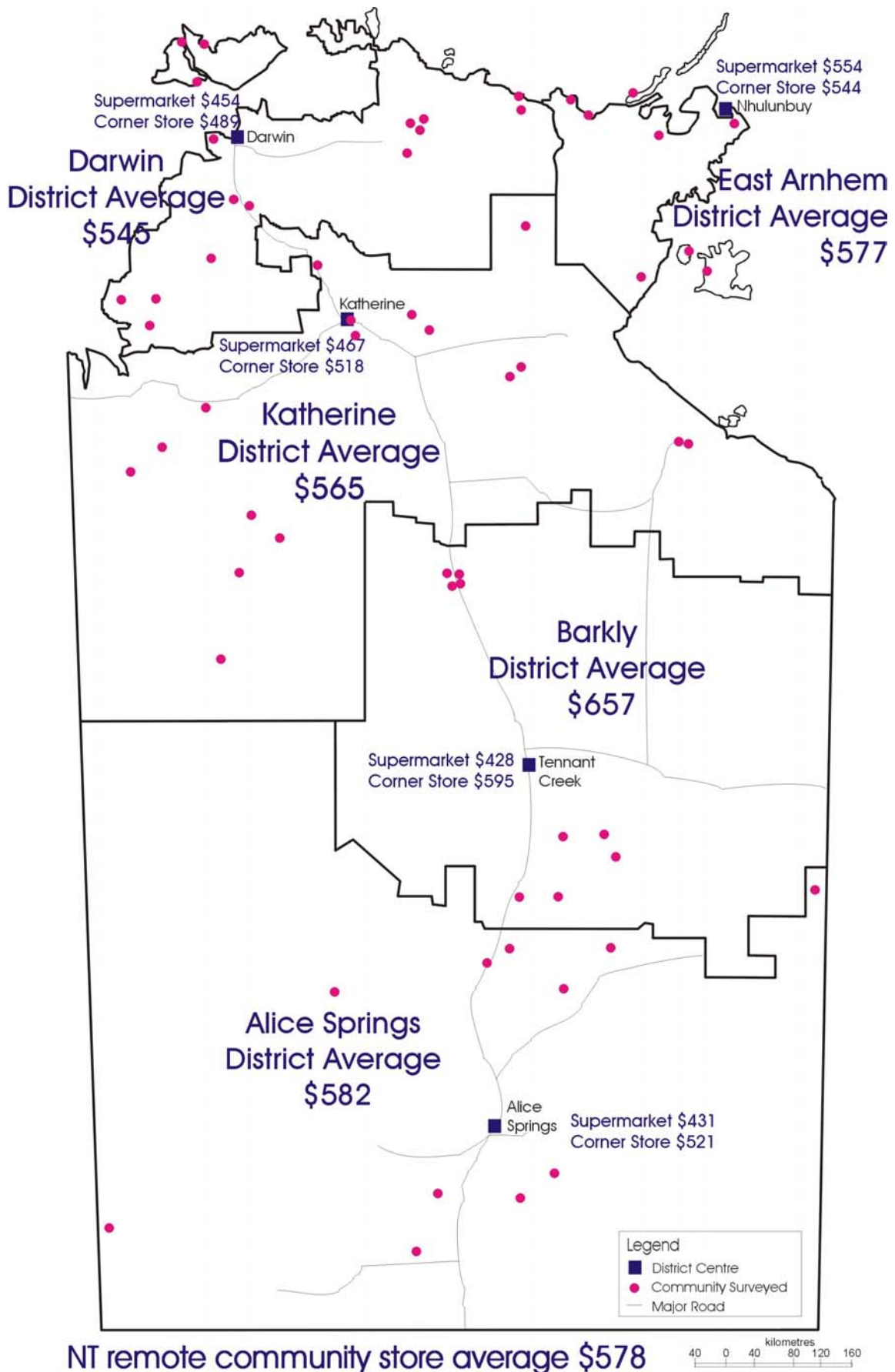


Figure 1: Location of stores surveyed and cost of food basket in each district

2. Results

2.1. 2004 Survey

Sixty remote stores were surveyed between April and June 2004. Figure 1 on the previous page illustrates the locations of the stores surveyed and the average cost of the basket of foods in each district.

Table 1: Ownership/Management characteristics in remote stores

	Darwin District	Katherine District	East Arnhem District	Alice Springs District	Barkly District	Total all Districts
*Ownership						
Community owned	11	7	4	6	3	29
Privately owned/leased	4	3	-	1	6	16
Aboriginal Corporation eg ALPA	1	3	4	-	-	11
Joint: Community/Abor. Corp.	-	-	-	-	-	-
Joint: Community/Private	-	2	-	-	-	2
Leased from community	-	2	-	-	-	2
*Management Characteristics						
Store Committee	9	8	6	7	1	31
Nutrition Policy	0	5	6	0	1	12
Total Stores Surveyed	16	17	8	10	9	60

- Approximately 48% of stores surveyed were owned and operated by the community.
- There was little change in ownership/management characteristics compared to last year's survey.
- 20% of stores stated that they had a Nutrition Policy although these were not cited for confirmation.
- Half (50%) of all stores surveyed had a Store Committee.

Table 2 : Employment characteristics in remote stores

	Darwin District	Katherine District	East Arnhem District	Alice Springs District	Barkly District	Total all Districts
Stores with Aboriginal employees	13	13	8	6	3	43
Number of Aboriginal employees	104	61	102	24	10	301
Total employees	179	103	134	52	27	495
Percent Aboriginal employees	58%	59%	76%	46%	37%	61%
Total Stores Surveyed	16	17	8	10	9	60

- 61% of employees in the remote stores surveyed were Aboriginal.
- The proportion of Aboriginal employees was lowest in the Barkly and Alice Springs districts.
- The proportion of Aboriginal employees was greatest in Darwin, Katherine and East Arnhem stores where Aboriginal people made up 59% and 76% respectively of the workforce in stores.

*Note: Store Managers were asked about ownership of the store, and if they had a Nutrition Policy, and / or Store Committee. At the time the surveys were undertaken it was not stipulated what constituted a 'policy', a 'committee', or exactly how 'ownership' was to be defined. Therefore, in reading this report the information about Nutrition Policy, Store Committee and ownership are based on the information supplied. Further work needs to be done to define these terms to avoid misinterpretation.

Variety and quality of fruit and vegetables

Table 3: Comparison of the range of fresh fruit and vegetables available in remote stores

	Darwin District	Katherine District	East Arnhem District	Alice Springs District	Barkly District	All Districts
Average number fresh fruit choices	10	5	8	8	4	7
Range (Lowest - Highest)	5 – 19	2 – 12	3 – 11	3 – 13	3 – 6	2 – 19
Average number of fresh vegetable choices	18	13	11	13	10	13
Range (Lowest - Highest)	11 – 30	4 – 25	5 – 14	7 – 21	5 – 14	4 – 30
Total stores surveyed	16	17	8	10	9	60

- On average there were 7 different choices of fresh fruit and 13 different choices of fresh vegetables in remote stores.
- Information was not collected on the quantities of fruit and vegetables available.
- All stores had fresh fruit and vegetables available on the day of survey, the minimum number available was two and four respectively.

Table 4: Comparison of the quality of fresh fruit available in remote stores

	Darwin District	Katherine District	East Arnhem District	Alice Springs District	Barkly District	All Districts
Good	89%	76%	90%	70%	83%	82%
Fair	9%	17%	10%	25%	14%	15%
Poor	2%	6%	-	5%	3%	3.2%
Rotten	-	1%	-	-	-	<1%

Table 5: Comparison of the quality of fresh vegetables available in remote stores

	Darwin District	Katherine District	East Arnhem District	Alice Springs District	Barkly District	All Districts
Good	93%	84%	75%	83%	96%	86%
Fair	6%	16%	18%	17%	3%	12%
Poor	<1%	-	7%	-	1%	2%
Rotten	-	<1%	-	-	-	<1%

- Overall 82% of fresh fruit and 86% of fresh vegetables were ‘good’ on the day of survey.
- East Arnhem and Darwin districts had the highest proportion of ‘good’ fresh fruit on the day of survey.
- The Barkly and Darwin districts had the highest proportion of ‘good’ fresh vegetables on the day of survey.

NB. - Rating quality of fresh food is difficult and very much dependent on the opinion of those undertaking the survey. Descriptive tables were included on the survey sheets to help reduce the variance amongst those undertaking the survey.
 - Due to the rounding of numbers, percentages shown in the tables 4 and 5 do not total 100% in some instances.

District centre costs compared with remote store costs

Comparison of the cost of the food basket in different communities needs to be done carefully. It must be noted that in order to estimate the cost of a similar basket of goods for all communities it was necessary to ‘cost’ items even when they were not available in the community store. In cases when an item was not available in the remote store, the price of that item at the district supermarket was used. Consequently, stores that have a higher proportion of “missing” or unavailable items are likely to have a cheaper total basket of goods because the supermarket cost is used. If an item was out of stock but was usually carried by the store, the store price of that item was included in the survey. Thus the term ‘availability’ in the table below refers to the availability of a *price* from the store, not necessarily the availability of the item on the day of the survey.

Table 6: Availability of items in the food basket in remote stores

	Darwin District	Katherine District	East Arnhem District	Alice Springs District	Barkly District	NT Average
Average availability of items in the food basket	98%	97%	98%	98%	95%	97%
Range (Lowest - Highest)	93 - 100%	85 - 100%	95 - 100%	85 - 100%	85 - 100%	85 - 100%
Total stores surveyed	16	17	8	10	9	60

- On average 97% of items listed in the basket were available, or usually available, in the remote stores.
- Nearly half (24) of the 60 remote stores surveyed had, or usually had, all the listed items on their shelves at the time of the survey.

Table 7: Average cost of food basket in remote stores

	Darwin District	Katherine District	East Arnhem District	Alice Springs District	Barkly District	NT District Store Average
Bread & Cereals	\$87	\$88	\$100	\$85	\$91	\$89
Fruit	\$136	\$147	\$137	\$148	\$184	\$148
Vegetables	\$112	\$121	\$116	\$131	\$129	\$121
Meat & alternative	\$90	\$91	\$96	\$92	\$107	\$94
Dairy	\$94	\$96	\$104	\$102	\$118	\$101
Other foods	\$25	\$22	\$24	\$23	\$27	\$24
Total Basket	\$545	\$565	\$577	\$582	\$657	\$578
Number of Stores	16	17	8	10	9	60

- The average cost of the basket of foods ranged from \$545 in the Darwin district to \$657 in the Barkly district.
- The average cost of the basket of foods in all remote stores surveyed was \$578.

NB. Due to rounding of numbers the sum of food groups does not equal the total basket cost in some instances in table 7.

Table 8: Cost of food basket in district centre supermarkets and corner stores

	Darwin	Katherine	East Arnhem	Alice Springs	Barkly	NT Average
Bread & Cereals						
Supermarket	\$74	\$78	\$82	\$63	\$61	\$72
Corner store	\$85	\$88	\$89	\$86	\$75	\$85
Fruit						
Supermarket	\$111	\$103	\$143	\$118	\$128	\$121
Corner store	\$107	\$123	\$132	\$139	\$180	\$136
Vegetables						
Supermarket	\$95	\$95	\$123	\$79	\$77	\$94
Corner store	\$96	\$110	\$103	\$95	\$142	\$109
Meat & alternative						
Supermarket	\$65	\$81	\$83	\$72	\$70	\$74
Corner store	\$83	\$78	\$98	\$78	\$82	\$84
Dairy						
Supermarket	\$94	\$94	\$105	\$85	\$72	\$90
Corner store	\$97	\$97	\$101	\$102	\$88	\$97
Other foods						
Supermarket	\$15	\$16	\$18	\$13	\$20	\$16
Corner store	\$21	\$22	\$23	\$22	\$28	\$23
Total Basket						
Supermarket	\$454	\$467	\$554	\$431	\$428	\$467
Corner store	\$489	\$518	\$544	\$521	\$595	\$533

Supermarket

- The average cost of the basket in the supermarkets was \$467.
- East Arnhem had the most expensive supermarket food basket (\$554) and Barkly district had the cheapest (\$428).

Corner store

- The average cost of the basket in the corner stores was 14% (\$533 compared to \$467) higher in the corner stores than the district centre Supermarkets.
- Barkly had the most expensive corner store food basket (\$595) and Darwin had the cheapest (\$489).

NB. Due to rounding of numbers the sum of food groups does not equal the total basket cost in some instances in table 8.

Table 9: Comparison (in percent) of the cost of the food basket in remote stores (averaged) with a Darwin supermarket and Darwin corner store

	Darwin Remote	Katherine Remote	East Arnhem Remote	Alice Springs Remote	Barkly Remote	Average-NT Remote Stores
Bread & Cereals						
Supermarket	118%	119%	135%	115%	123%	121%
Corner store	103%	104%	118%	100%	107%	105%
Fruit						
Supermarket	122%	127%	122%	134%	166%	134%
Corner store	127%	132%	120%	139%	172%	139%
Vegetables						
Supermarket	118%	128%	122%	138%	136%	127%
Corner store	117%	126%	120%	136%	135%	126%
Meat & alternative						
Supermarket	139%	140%	148%	142%	165%	145%
Corner store	109%	110%	116%	111%	129%	113%
Dairy						
Supermarket	100%	102%	111%	109%	125%	107%
Corner store	97%	99%	108%	105%	122%	104%
Other foods						
Supermarket	167%	145%	158%	153%	179%	159%
Corner store	119%	104%	113%	109%	128%	114%
Total Basket						
Supermarket	120%	123%	127%	128%	145%	127%
Corner Store	111%	114%	118%	119%	134%	118%

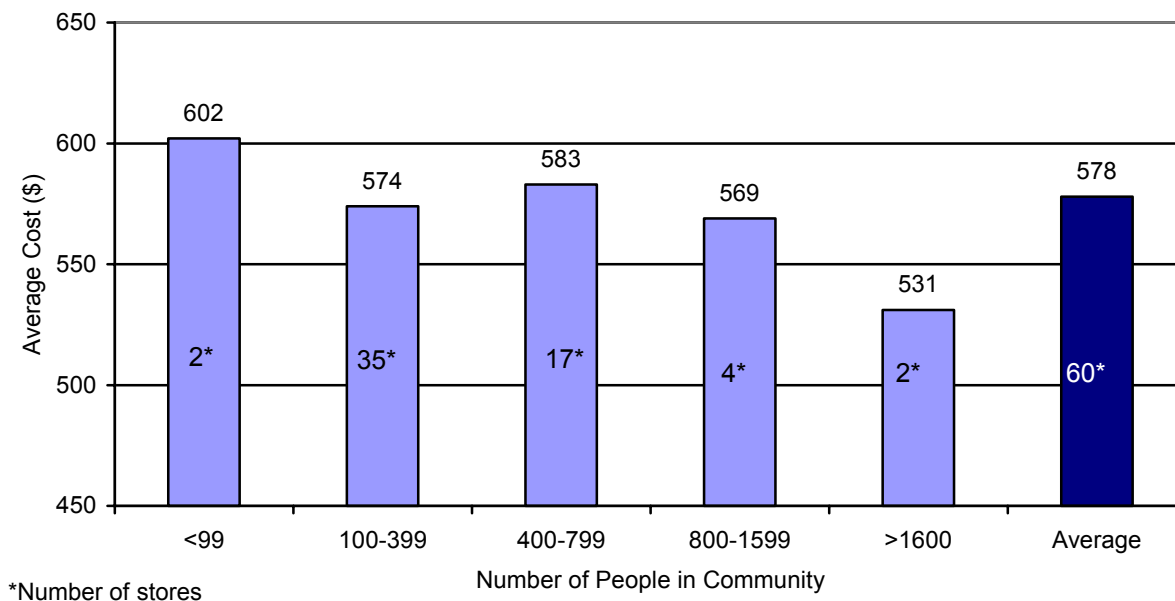
- Barkly remote stores are the most expensive in the NT with 45% higher cost than the Darwin supermarket and 34% higher than the Darwin corner store*.
- Darwin remote stores were the cheapest being 20% higher than the Darwin supermarket and 11% higher than the Darwin corner store.
- Overall the prices in remote stores were 27% higher than the same basket of goods bought in a Darwin supermarket, and 18% higher than in a Darwin corner store.

Remoteness

The stores surveyed were classified using the ARIA remoteness index⁴ to determine the remoteness of the community. The average cost of the food basket in the stores classified as 'very remote' was \$619 (44 stores) and the average cost of the food basket in stores classified as 'remote' was \$522 (13 stores). The remaining three stores were in the 'moderately accessible' category and the average cost at these stores was \$516.

Population

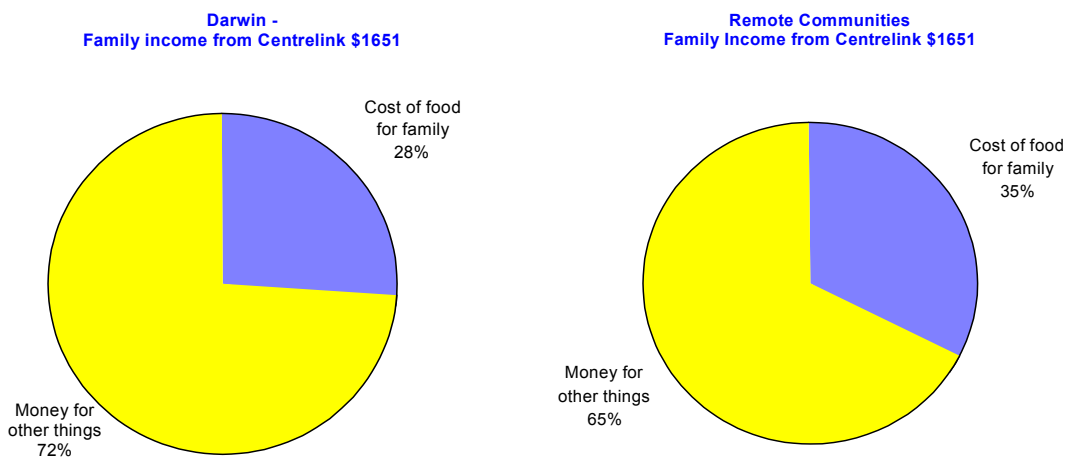
Figure 2: Average cost of the food basket and population of community



On average, the cost of the basket of foods decreased as the population of the community increased.

Relation between family income and the cost of the food basket

Figure 3: Relationship between cost of food basket and income in remote communities compared to Darwin supermarket



The above graphs show the amount of money a family of 6 needs to spend on the food basket for two weeks. The family’s income has been determined as outlined in Appendix B. For every \$100 of income, a family in Darwin spends \$28 on the food basket, whereas a family in a remote community will spend approximately \$35 on the same basket of food.

2.2. *Cost compared to last year's survey*

Table 10: Changes (in percent) in food prices in remote stores from 2003 to 2004

	Darwin Remote	Katherine Remote	East Arnhem Remote	Alice Springs Remote	Barkly Remote	NT Average
Bread & Cereals	-3%	4%	7%	3%	5%	3%
Fruit	-3%	16%	-10%	13%	25%	9%
Vegetables	-3%	10%	-2%	-4%	3%	3%
Meat & alternative	0%	-2%	-1%	3%	4%	0%
Dairy	0%	-7%	-7%	2%	2%	-2%
Other foods	-4%	-13%	-9%	4%	3%	-5%
Total Basket	-2%	4%	-4%	5%	9%	3%

- Overall prices in the remote stores were 3% higher than last year.
- Barkly remote stores had the biggest (9%) price rise of all the districts.
- The average price of the basket fell 2% and 4% in Darwin and East Arnhem respectively.
- The average price of fruits increased by 9%.
- Vegetables, breads and cereals rose by 3% while dairy dropped by 2%.

Table 11: Changes (in percent) in food prices in district centre supermarkets from 2003 to 2004

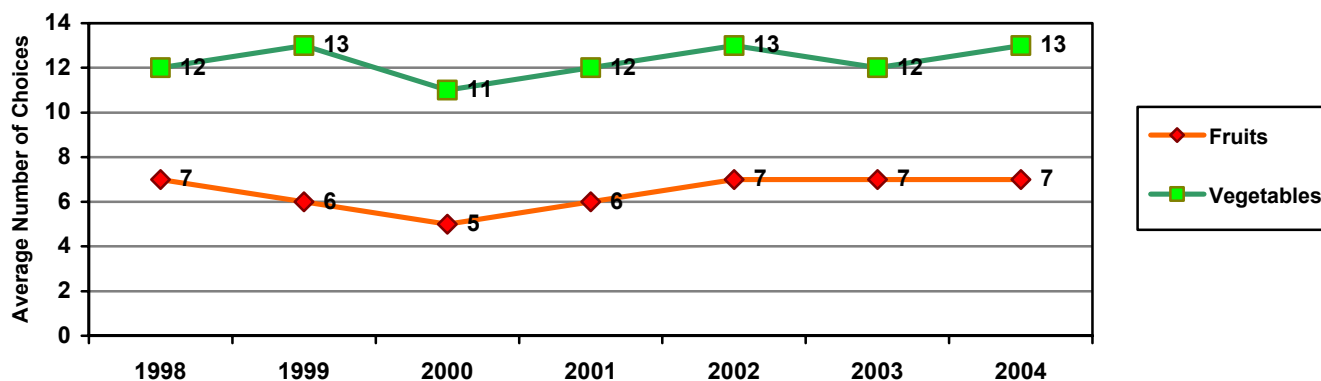
	Darwin Supermarket	Katherine Supermarket	East Arnhem Supermarket	Alice Springs Supermarket	Barkly Supermarket	NT Supermarkets Average
Bread & Cereals	1%	15%	12%	-5%	-6%	8%
Fruit	-5%	7%	5%	33%	36%	13%
Vegetables	3%	16%	5%	20%	-1%	8%
Meat & alternative	-7%	0%	6%	20%	-1%	3%
Dairy	1%	1%	0%	0%	-23%	-4%
Other foods	0%	0%	0%	-13%	5%	-1%
Total Basket	1%	7%	5%	13%	2%	5%

- The average price of the food basket in district centre supermarkets has increased by 5% from last year.
- Prices for the food basket in the supermarkets increased in all districts with the lowest increase found in the Darwin (1%) and Barkly district (2%) and the highest increase found in the Alice Springs district (13%).
- The price of dairy from the basket decreased by 4%.
- An increase of 13% was found in the fruit portion of the basket while vegetables and breads and cereals increased by 8%.

2.3. Comparison of surveys 1998 - 2004

Changes in variety of fresh fruit and vegetables

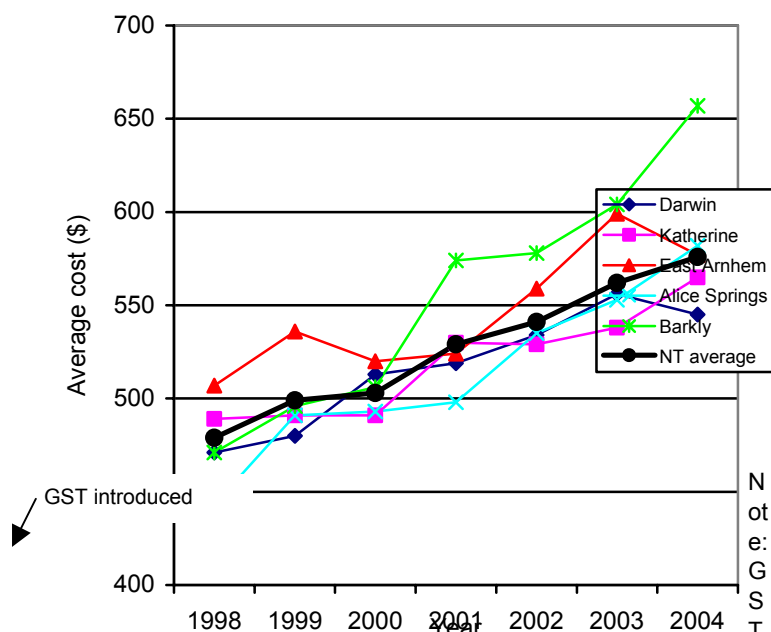
Figure 4: Average number of varieties of fresh fruit and vegetable in remote stores 1998-2004



Little change is evident in the average number of varieties of fresh fruit and vegetables available in remote community stores.

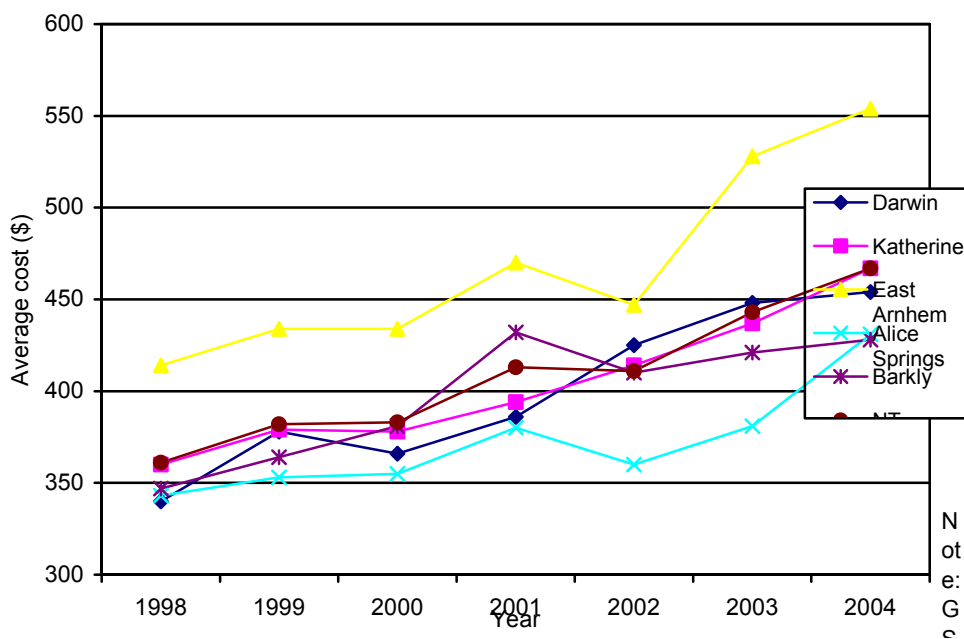
Price comparisons

Figure 5: Average cost of food basket in remote stores 1998 - 2004



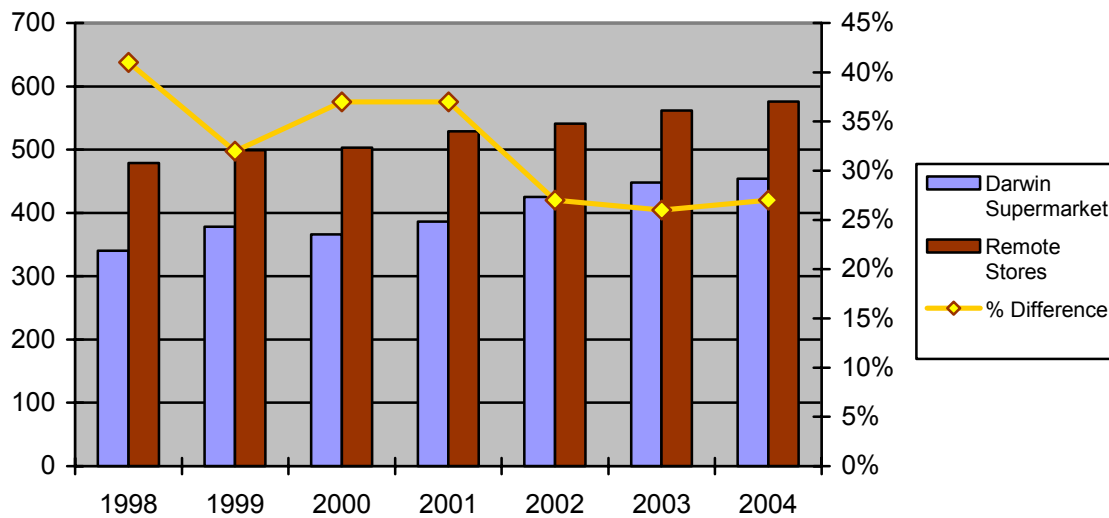
- East Arnhem remote stores were the most expensive from 1998 to 2000. From 2001 through to 2004, Barkly was the most expensive district with a marked increase in 2001 and 2004.
- The average cost of the basket of foods in remote stores increased each year. The increase was 4% from 1998 – 1999, 1% from 1999 – 2000, 5% from 2000 – 2001, 2% from 2001 – 2002, 4% from 2002 – 2003 and 2% from 2003 - 2004.
- Overall the cost of the basket of foods increased by 20% between 1998 and 2004.

Figure 6: Cost of food basket in district centre supermarkets 1998 – 2004



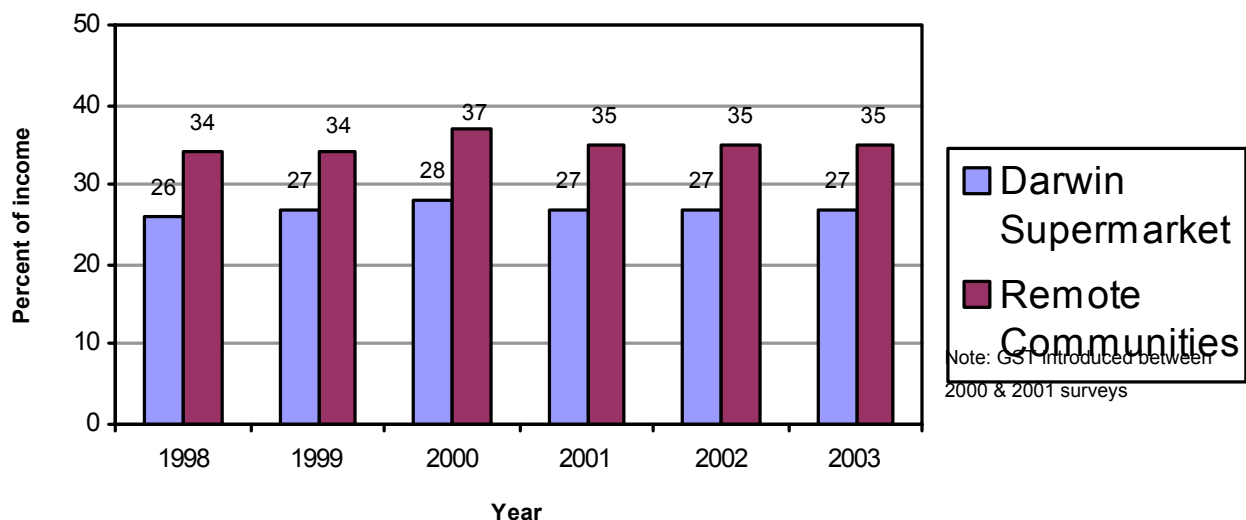
- The supermarket surveyed in East Arnhem has been the most expensive supermarket each year.
- Alice Springs supermarket has been the least expensive for the years 1999-2003.
- Barkly and Alice Springs have been the least expensive for 2004.
- The average cost of the basket in NT supermarkets has risen from \$361 in 1998 to \$467 in 2004. This represents an increase of 29%.
- The cost of the basket of foods increased dramatically in the East Arnhem supermarket since 2002 compared to supermarkets in other districts. This was due largely to price increases in the fruit and vegetable portions of the basket (refer to Tables 8 & 11).
- However, Alice Springs recorded the greatest rise (13%) for this year.

Figure 7: Cost of basket of foods in remote stores compared with Darwin supermarket 1998 –2004



- The cost of the basket of foods has increased in both the Darwin supermarket and remote stores from 1998-2004.
- The relative cost of the basket in the remote stores compared to Darwin was greatest in 1998 when it was 41% higher.
- In subsequent years this gap have narrowed consistently from 37% in 2000 to 27% (2004).

Figure 8: Percent of income needed to purchase the food basket at Darwin supermarket compared to remote store.



- Figure 8 above shows the percentage of income that was needed to purchase the food basket in community stores and in the Darwin supermarket.

town supermarket for each year of the survey.

- The proportion of income required to purchase the food basket has remained fairly constant since 1998.

3. Discussion

When interpreting the results described in the previous section a number of issues must be considered. Firstly, a letter was sent to each store manager prior to the survey period informing them that their store would be surveyed in the coming months, and in some instances the store manager may have been informed of the exact date of survey. Prior notice may have influenced store prices during the survey period. Secondly, it must be remembered that although this survey measures the variety, quality and availability of some healthy food items, it makes no attempt to measure the quantities of these foods available.

Community stores provide an important source of employment for people living in remote communities. The proportion of Aboriginal employees in stores was greatest in the East Arnhem district (76%), where there are a large number of stores owned or managed by Arnhem Land Progress Association (ALPA). ALPA has a policy of employing local Aboriginal people to work in their stores. The proportion of Aboriginal people employed in community stores was lower in the other four districts where there is a greater proportion of privately owned/leased stores.

There is strong evidence that an adequate intake of fruits and vegetables is protective against diseases such as coronary heart disease, hypertension, type 2 diabetes, stroke and some cancers. Results from national surveys have shown that Australians do not consume enough fruit and vegetables. For people living in remote communities in the Northern Territory, consumption is further compromised because of limited availability and high costs. For these reasons improving the availability, variety, quality and affordability of fruits and vegetables is a priority identified in both Territory and national nutrition policies and additional data regarding fruit and vegetables are collected in this survey.

The average number of fresh fruit and vegetables available in remote stores was seven and thirteen respectively. This number has remained fairly stable from 1998 to 2004. Currently there are no recommendations as to the number of varieties of fruit and vegetables that should be available. The Australian Guide to Healthy Eating⁵ lists seven different 'groups' of fruits: citrus, tropical, melons, berries, grapes, stone, apples and pears; and six different 'groups' of vegetables: dark green, orange, cruciferous, starchy, salad and legumes. These different types of vegetables and fruits provide more of some types of nutrients than others such as vitamin A, C and folate. The inclusion of variety within the food groups increases the likelihood that one's diet contains all the nutrients required for good health. Further analysis would be required to determine how many stores had at least one variety of fruit or vegetable available in each of these groups.

The cost of the fruit and vegetable portions of the basket combined account for over 47% of the total basket in most stores surveyed. Fruit and vegetable prices are influenced by changes in climatic and agricultural conditions and large fluctuations in prices can be seen from survey to survey. Fluctuations in the cost of fruit and vegetables can therefore account for many of the larger differences seen in the total cost of the basket of foods from year to year.

Although not the cheapest, the Darwin supermarket and corner store were used as the benchmark for comparing prices in remote community stores in this report. The Darwin stores were chosen because the Darwin region is where the majority of Territorians live, and other states that conduct similar surveys also compare prices in remote stores to their capital city price.

The cost of foods in remote stores is also compared with the cost of foods in district centre corner stores. Corner stores are small suburban supermarkets that are thought to have a similar buying power to remote stores. In 2003, Darwin corner store food prices rose by 22%, however, this year the price has fallen by 16%. The NT district corner store average did not differ from the previous year much as this was offset by increases in the other district corner stores.

The Northern Territory Treasury conducts a biannual survey of grocery prices in Darwin, Alice Springs, Katherine and Nhulunbuy supermarkets. The Grocery Price Survey for the June half-year 2004 found that Territory supermarket prices were cheapest in Alice Springs and the most expensive in Nhulunbuy (East Arnhem), and Katherine prices were marginally higher than Darwin prices⁶. With the exception of the results found for the Barkly store these findings are reflected in this report. The Barkly prices were found to be marginally lower than Alice prices in this year's Market Basket Survey.

4. Summary

Sixty rural and remote stores were surveyed in the Northern Territory between April and June 2004. These surveys looked at the cost, availability and quality of a 'healthy family basket' of food as well as collecting information of store ownership and management characteristics. The 2004 Northern Territory Market Basket Survey demonstrated that the cost of the healthy basket of foods was, on average, 27% more expensive in remote stores in the Northern Territory than the average cost in a supermarket in Darwin. Although the cost of the basket of food has increased from 1998 to 2003, the proportion of income required to purchase these foods has remained similar over this time. The majority of available fresh fruit and vegetables from the remote stores surveyed were of good quality.

5. References

1. Lee AJ, O'Dea K, Mathews JD. Apparent dietary intake in remote Aboriginal communities. *Aust J Publ Health*, 1994: 18(2).
2. McComb J, Price R, Priestly J, Freeman J, Trevaskis G, Rogers O, Lion R, Hobson V, Morley T, Cubillo B. Surveys of Food Availability, Quality and Price in Top End Rural and Remote Communities: The Dry Season (April –July 1998). Food and Nutrition Unit, Territory Health Services, 1988.
3. National Health and Medical Research Council. The Core Food Groups: The Scientific Basis for Developing Nutrition Education Tools. 1994.
4. Information and Research Branch of the Department of Health and Aged Care, and the National Key Centre for Social Applications of Geographical Information Systems, 'Accessibility/Remoteness Index of Australia (ARIA)', *Occasional Papers Series No. 6*, Canberra, 1999.
5. National Health and Medical Research Council, 'The Australian Guide to Healthy Eating', 2001
6. http://www.nt.gov.au/ntt/economics/publications/gps/gps_2004jun.pdf- Grocery Price Survey June half-year 2004.

Appendices

Appendix A: Foods in the Market Basket Survey

Appendix B: Fortnightly Income for Hypothetical Family of Six

Appendix C: Survey results of the 2004 Market Basket Survey by district and community

Appendix A: Foods in the Market Basket Survey

Breads and Cereals

Flour 4 x 1 kgs packets
Bread 14 loaves
Weetbix 1 kg packet
Rolled Oats 1 kg packet
Long Grain Rice 1 kg packet
Canned Spaghetti 7 x 425g cans

Fruit

Apples 50 apples
Oranges 55 oranges
Bananas 55 bananas
Orange Juice 7 litres
Canned Fruit 7 x 440g cans

Vegetables

Potatoes 8 kilograms
Onions 3 kilograms
Carrots 4 kilograms
Cabbage 3 kilograms (1 large)
Pumpkin 3 kilograms
Fresh Tomatoes 2 kilograms

Vegetables (continued)

Canned Tomatoes 6 x 420g tomatoes
Canned Peas 6 x 420g peas
Canned Beans 7 x 440g beans
Baked Beans 7 x 425g baked beans

Meat & Alternatives

Corned Beef 7 x 340g cans
Meat and Vegetables 7 x 450g cans
Fresh/Frozen meat 1.5 kgs
Fresh/Frozen Chicken 1 kg
Eggs, 55's 1 dozen

Dairy

Powdered Milk 7 x 1 kgs tins
Cheese 3 x 250g packet

Other Foods

Margarine 4 x 500g packets
Sugar 4 x 1kg packets
Sugar 1 x 500g packet

Appendix B: Fortnightly Income for Hypothetical Family of Six – 2004*

Grandmother aged 60		
Pharmaceutical Allowance	\$5.80	
Remote Area Allowance	\$18.20	
Single rate	\$452.80	
Father aged 35		
New Start	\$347.30	
Remote Area Allowance (includes the children)	\$37.50	
Mother aged 33		
Parenting Payment	\$347.30	
Family Tax Benefit A		
- for two children under 13yrs	\$260.96	
- for one child 13-15 yrs	\$165.48	
Remote Area Allowance	\$15.60	
TOTAL	\$1650.94	

Note: The Remote Area Allowance is based on age and marital status, and does not vary according to area of residence in the NT (eg. eligible persons receive the same amount in a remote community as they would in Darwin).

*Source: www.centrelink.gov.au

Appendix C:
Survey results of the 2004 Market Basket Survey by district and community

Darwin

Code	Store Ownership*	Nutrition policy	Store committee	Aboriginal / non Aboriginal workers	Training in retail	Training in nutrition	Cost of basket	Availability	Fruit (fresh) variety	Fruit (fresh) quality	Fruit price	Vegetable (fresh) variety	Vegetable (fresh) quality	Vegetable price	Population
1	p	no	no	0/2	0	0	\$467	98%	10	10 good	\$106	17	16 good, 1 fair	\$108	216
2	p	no	no	0/6	0	0	\$498	100%	11	7 good, 4 fair	\$112	22	22 good 1fair	\$107	216
3	c	no	yes	4/2	0	0	\$583	95%	5	2 good, 3 fair	\$174	14	12 good, 1 fair, 1 poor	\$114	207
4	c	no	no	7/3	0	0	\$524	100%	11	10 good, 1 fair	\$141	16	14 good, 2 fair	\$112	308
5	c	no	yes	7/9	3	3	\$526	98%	7	4 good, 1 fair, 1 poor	\$139	12	12 good	\$95	753
6	c	no	yes	8/1	0	0	\$658	93%	5	5 good	\$160	19	18 good	\$134	753
7	p	no	no	3/5	0	0	\$519	100%	10	9 good, 1 fair	\$138	18	13 good, 5 fair	\$113	753
8	p	no	no	1/19	1	2	\$470	100%	19	19 good	\$111	30	25 good	\$100	217
9	a	no	yes	14/4	3	0	\$548	93%	11	11good	\$143	18	18 good	\$105	1382
10	c	no	yes	10/4	0	0	\$514	98%	14	14 good	\$125	24	24 good	\$104	1882
11	c	no	yes	9/2	Not stated	0	\$527	100%	13	12 good, 1 fair	\$123	22	21 good, 1 fair	\$120	388
12	c	no	yes	24/6	0	0	\$537	98%	8	5 good, 2 fair, 1 poor	\$136	11	9 good, 1 fair	\$104	1218
13	c	no	no	6/1	1	0	\$604	95%	6	5 good, 1 poor	\$152	13	12 good, 1 fair	\$139	351
14	c	no	no	0/2	0	0	\$613	98%	6	6 good	\$152	12	12 good	\$122	187
15	c	no	yes	5/1	0	0	\$499	98%	16	15 good, 1 fair	\$125	22	19 good, 3 fair	\$105	323
16	c	no	yes	6/7	0	0	\$637	98%	13	13 good	\$136	16	15 good 1 fair	\$124	1396

*p = private, c = community, a = aboriginal corporation, l = leased from community

Average population	659		
Number of communities with 100-399 people	9		
Number of communities with 400-799 people	3		
Number of communities with 800-1599 people	3		
Number of communities with more than 1600 people	1		
Aboriginal / non Aboriginal workers	85/63		
Number of stores surveyed this year	16	Number of stores surveyed last year	15
Average availability	98%		
Average price	\$545		
Average fruit price	\$136		
Average vegetable price	\$113		

Katherine

	Store Ownership*	Nutrition policy	Store committee	Aboriginal / non Aboriginal workers	Training in retail	Training in nutrition	Cost of basket	Availability	Fruit (fresh) variety	Fruit (fresh) quality	Fruit price	Vegetable (fresh) variety	Vegetable (fresh) quality	Vegetable price	Population
1	c	yes	yes	7/1	7	0	\$581	95%	4	3 good, 1 fair	\$170	10	8 good, 2 fair	\$109	396
2	c	no	yes	8/0	3	0	\$578	98%	9	8 good, 1 fair	\$141	16	16 good	\$136	400
3	c	Yes	yes	8/2	8	0	\$532	95%	10	10 good	\$158	20	15 good, 1 fair	\$97	323
4	c	no	yes	1/2	2	0	\$562	98%	2	2 good	\$119	15	8 good, 1 fair	\$119	166
5	p	no	no	0/5	0	0	\$631	100%	3	4 fair	\$184	10	8 good, 2 fair	\$122	519
6		no	no	1/1	0	0	\$483	100%	5	4 fair, 1 poor	\$113	10	8 good, 2 fair	\$98	129
7	p	no	no	0/5	0	0	\$653	100%	5	2 good, 3 poor	\$194	17	14 good, 4 fair	\$148	519
8	c	no	yes	5/0	0	0	\$596	85%	2	2 good	\$120	9	5 good, 4 fair	\$163	316
9	l	no	no	1/2	1	1	\$672	98%	2	Not stated	\$199	15	Not stated	\$192	318
10	c	no	no	8/0	1	0	\$482	93%	2	1 good, 1 fair	\$114	4	1 good, 3 fair	\$80	167
11	c	yes	yes	6/3	2	2	\$545	98%	8	8 good	\$157	17	17 good	\$101	237
12	c	yes	yes	7/10	5	2	\$556	98%	12	12 good	\$141	25	23 good, 2 fair	\$108	721
13		no	no	0/1	0	0	\$576	100%	2	1 fair, 1 poor	\$172	5	3 good, 2 fair	\$119	145
14	c	no	yes	2/1	0	0	\$630	100%	3	1 good, 2 fair	\$136	12	5 good, 7 fair	\$146	187
15	p	no	No	0/4	0	0	\$501	98%	7	5 good, 2 fair	\$126	13	14 good	\$105	464
16		no	No	1/5	0	0	\$508	100%	2	1 good, 1 poor	\$135	11	9 good, 1 fair, 1 poor	\$96	438
17	c	no	No	6/0	0	0	\$425	100%	2	1 good, 1 poor	\$118	10	10 good	\$123	187

*p = private, c = community, a = aboriginal corporation, l = leased from community

Average population	331
Number of communities with less than 99 people	0
Number of communities with 100-399 people	12
Number of communities with 400-799 people	5
Aboriginal / non Aboriginal workers	61/42
Number of stores surveyed this year	17
Number of stores surveyed last year	19
Average availability	97%
Average price	\$559
Average fruit price	\$141
Average vegetable price	\$123

East Arnhem

	Store Ownership*	Nutrition policy	Store committee	Aboriginal / non Aboriginal workers	Training in retail	Training in nutrition	Cost of basket	Availability	Fruit (fresh) variety	Fruit (fresh) quality	Fruit price	Vegetable (fresh) variety	Vegetable (fresh) quality	Vegetable price	Population
1	c	no	no	5/3	0	0	\$596	98	9	10 good	\$149	10	10 good, 3 fair	\$104	724
2	a	yes	yes	30/5	12	0	\$533	93	11	11 good, 3 fair	\$108	13	13 good, 6 fair, 1 poor	\$108	1377
3	a	yes	yes	16/2	Not stated	Not stated	\$549	100	6	7 good	\$118	9	6 good, 4 fair	\$111	743
4	a	yes	yes	21/3	8	6	\$572	98	9	10 good	\$117	14	9 good, 6 fair, 1 poor	\$106	1030
5	c	no	yes	2/2	0	0	\$629	100	8	7 good, 2 fair	\$149	9	9 good	\$142	206
6	c	yes	no	7/5	0	0	\$622	98	3	3 good	\$205	5	3 good, 1 fair, 1 poor	\$117	665
7	a	yes	yes	19/2	12	10	\$590	98	8	10 good	\$140	12	12 good	\$128	754
8	c	yes	yes	2/10	12	0	\$527	98	8	7 good, 2 fair	\$111	13	8 good, 4 poor	\$109	491

*p = private, c = community, a = aboriginal corporation, l = leased from community

Average population	749		
Number of communities with 100-399 people	1		
Number of communities with 400-799 people	4		
Number of communities with 800-1599 people	3		
Aboriginal / non Aboriginal workers	102/32		
Number of stores surveyed this year	8	Number of stores surveyed last year	7
Average availability	98%		
Average price	\$577		
Average fruit price	\$137		
Average vegetable price	\$116		

Alice Springs

	Store Ownership*	Nutrition policy	Store committee	Aboriginal / non Aboriginal workers	Training in retail	Training in nutrition	Cost of basket	Availability	Fruit variety	Fruit (fresh) quality	Fruit price	Vegetable (fresh) variety	Vegetable (fresh) quality	Vegetable price	Population
1	c	no	yes	2/2	2	2	\$507	95%	10	6 good, 4 fair	\$123	15	14 good, 3 fair	\$98	393
2	c	no	yes	0/6	0	0	\$563	98%	6	6 good	\$132	14	12 good, 2 fair	\$122	691
3	a	no	yes	1/5	0	0	\$623	100%	7	7 good	\$181	17	17 good	\$141	254
4	c	no	no	0/3	2	0	\$623	100%	7	6 good, 1 poor	\$178	14	9 good, 4 fair	\$136	16
5	a	no	yes	15/2	2	0	\$530	100%	13	11 good, 2 fair	\$131	21	16 good, 4 fair	\$121	346
6	a	no	yes	2/2	0	0	\$514	100%	11	3 good, 4 fair, 2 poor	\$123	13	4 good, 7 fair, 2 poor	\$115	220
7	p	no	no	0/2	0	0	\$765	98%	4	2 good, 2 fair	\$203	8	7 good, 1 fair	\$223	88
8	c	no	yes	2/2	0	0	\$563	100%	12	1 good, 4 fair	\$117	12	3 good, 1 fair	\$129	233
9	l	no	yes	2/2	0	0	\$439	100%	3	3 good	\$106	11	11 good	\$95	71
10	p	no	no	0/2	0	0	\$689	85%	3	2 good, 1 fair	\$188	7	7 good, 1 fair	\$129	378

*p = private, c = community, a = aboriginal corporation, l = leased from community

Average population	269	
Number of communities with less than 99 people	2	
Number of communities with 100-399 people	6	
Number of communities with 400-799 people	2	
Aboriginal / non Aboriginal workers	24/28	
Number of stores surveyed this year	10	Number of stores surveyed last year
Average availability	95%	11
Average price	\$582	
Average fruit price	\$148	
Average vegetable price	\$131	

Barkly District

	Store Ownership*	Nutrition policy	Store committee	Aboriginal / non Aboriginal workers	Training in retail	Training in nutrition	Cost of basket	Availability	Fruit (fresh) variety	Fruit (fresh) quality	Fruit price	Vegetable (fresh) variety	Vegetable (fresh) quality	Vegetable price	Population
1	c	yes	yes	4/1	0	0	\$611	100%	3	3 good	\$163	10	8 good	\$126	472
2	c	no	no	4/2	0	0	\$669	93%	3	1 good, 1 fair	\$208	9	7 good, 1 fair	\$146	149
3	p	no	no	0/2	0	0	\$647	100%	6	3 good, 2 fair, 1 poor	\$163	7	6 good	\$97	268
4	c	no	no	2/2	0	0	\$617	100%	5	4 good, 1 fair	\$188	13	12 good	\$134	101
5	p	no	no	0/4	0	0	\$694	95%	6	4 good	\$177	13	11 good, 1 fair	\$159	268
6	p	no	no	0/2	0	0	\$822	85%	3	2 good, 1 fair	\$223	5	4 good	\$139	268
7	p	no	no	0/n.a	n/a	0	\$577	100%	6	6 good	\$175	14	Not stated	\$106	157
8	p	no	no	0/2	0	0	\$738	98%	4	4 good	\$213	9	7 good, 1 fair	\$171	157
9	p	no	no	0/2	0	0	\$537	88%	3	3 good	\$150	8	8 good	\$85	472

*p = private, c = community, a = aboriginal corporation, l = leased from community

Average population	256	
Number of communities with 100-399 people	7	
Number of communities with 400-799 people	2	
Aboriginal / non Aboriginal workers	10/17	
Number of stores surveyed this year	9	Number of stores surveyed last year
Average availability	95%	9
Average price	\$657	
Average fruit price	\$184	
Average vegetable price	\$129	